

G.C.B.D.A. Middle School Scale Sheet

- All scales are shown with tongue - up , slur - down articulation. However, slur - up, tongue - down is also acceptable.
- All Major Scales are to be performed in 90 seconds or less.
- The scales below are the minimum requirements. More octaves performed successfully will earn more points.

Concert C Major Scale



Musical notation for the Concert C Major Scale in 4/4 time. The scale is written on a single staff, starting on middle C (C4) and ascending to C5. The notes are C, D, E, F, G, A, B, C, B, A, G, F, E, D, C. The first half of the scale (C to B) is marked with a slur and a tongue-up articulation. The second half (B to C) is marked with a slur and a tongue-down articulation.

Concert F Major Scale



Musical notation for the Concert F Major Scale in 4/4 time. The scale is written on a single staff, starting on F4 and ascending to F5. The notes are F, G, A, Bb, C, D, E, F, E, D, C, Bb, A, G, F. The first half of the scale (F to E) is marked with a slur and a tongue-up articulation. The second half (E to F) is marked with a slur and a tongue-down articulation.

Concert Bb Major Scale



Musical notation for the Concert Bb Major Scale in 4/4 time. The scale is written on a single staff, starting on Bb4 and ascending to Bb5. The notes are Bb, C, D, Eb, F, G, Ab, Bb, Ab, G, F, Eb, D, C, Bb. The first half of the scale (Bb to Ab) is marked with a slur and a tongue-up articulation. The second half (Ab to Bb) is marked with a slur and a tongue-down articulation.

Concert Eb Major Scale



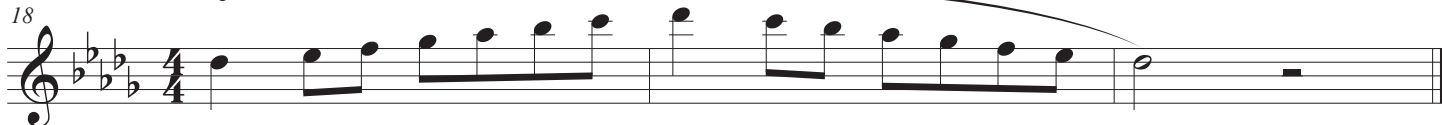
Musical notation for the Concert Eb Major Scale in 4/4 time. The scale is written on a single staff, starting on Eb4 and ascending to Eb5. The notes are Eb, F, G, Ab, Bb, C, D, Eb, D, C, Bb, Ab, G, F, Eb. The first half of the scale (Eb to D) is marked with a slur and a tongue-up articulation. The second half (D to Eb) is marked with a slur and a tongue-down articulation.

Concert Ab Major Scale



Musical notation for the Concert Ab Major Scale in 4/4 time. The scale is written on a single staff, starting on Ab4 and ascending to Ab5. The notes are Ab, Bb, C, D, Eb, F, G, Ab, G, F, Eb, D, C, Bb, Ab. The first half of the scale (Ab to G) is marked with a slur and a tongue-up articulation. The second half (G to Ab) is marked with a slur and a tongue-down articulation.

Concert Db Major Scale

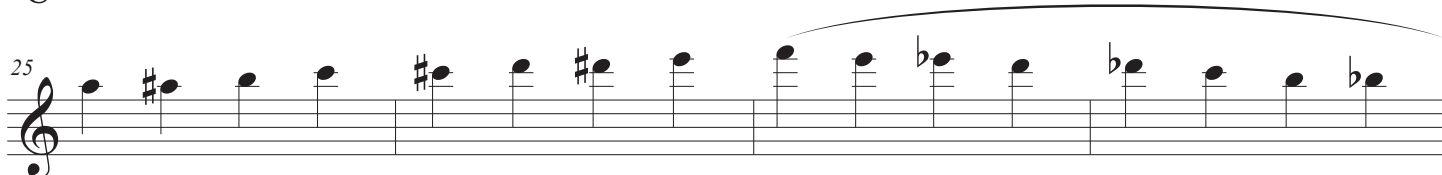


Musical notation for the Concert Db Major Scale in 4/4 time. The scale is written on a single staff, starting on Db4 and ascending to Db5. The notes are Db, Eb, F, G, Ab, Bb, C, Db, C, Bb, Ab, G, F, Eb, Db. The first half of the scale (Db to C) is marked with a slur and a tongue-up articulation. The second half (C to Db) is marked with a slur and a tongue-down articulation.

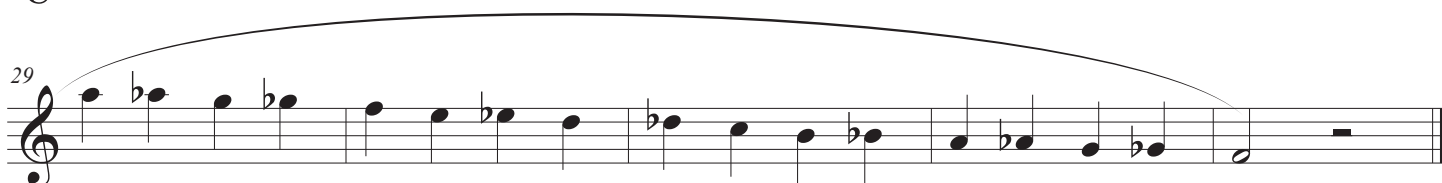
Chromatic - Untimed



Musical notation for the Chromatic - Untimed scale, measures 21-24. The scale is written on a single staff in 4/4 time, starting on C4 and ascending chromatically to C5. The notes are C, C#, D, D#, E, E#, F, F#, G, G#, A, A#, B, B#, C. Each note is marked with a slur and a tongue-up articulation.



Musical notation for the Chromatic - Untimed scale, measures 25-28. The scale is written on a single staff in 4/4 time, starting on C5 and descending chromatically to C4. The notes are C, B, Bb, Ab, G, F, E, D, C, B, Bb, Ab, G, F, E, D, C. Each note is marked with a slur and a tongue-down articulation.



Musical notation for the Chromatic - Untimed scale, measures 29-32. The scale is written on a single staff in 4/4 time, starting on C4 and ascending chromatically to C5. The notes are C, C#, D, D#, E, E#, F, F#, G, G#, A, A#, B, B#, C. Each note is marked with a slur and a tongue-up articulation.

Oboe

G.C.B.D.A. Middle School Scale Sheet

- All scales are shown with tongue - up , slur - down articulation. However, slur - up, tongue - down is also acceptable.

- All Major Scales are to be performed in 90 seconds or less.

- The scales below are the minimum requirements. More octaves performed successfully will earn more points.

Concert C Major Scale

Musical notation for the Concert C Major Scale in 4/4 time. The scale is written on a single staff, starting on middle C (C4) and ascending to C5, then descending back to C4. The notes are: C4, D4, E4, F4, G4, A4, B4, C5, B4, A4, G4, F4, E4, D4, C4. The scale is marked with a slur from the first note to the last, and a tongue-up articulation mark above the final note.

Concert F Major Scale

Musical notation for the Concert F Major Scale in 4/4 time. The scale is written on a single staff, starting on F4 and ascending to F5, then descending back to F4. The notes are: F4, G4, A4, Bb4, C5, D5, E5, F5, E5, D5, C5, Bb4, A4, G4, F4. The scale is marked with a slur from the first note to the last, and a tongue-up articulation mark above the final note.

Concert Bb Major Scale

Musical notation for the Concert Bb Major Scale in 4/4 time. The scale is written on a single staff, starting on Bb4 and ascending to Bb5, then descending back to Bb4. The notes are: Bb4, C5, D5, Eb5, F5, G5, Ab5, Bb5, Ab5, G5, F5, Eb5, D5, C5, Bb4. The scale is marked with a slur from the first note to the last, and a tongue-up articulation mark above the final note.

Concert Eb Major Scale

Musical notation for the Concert Eb Major Scale in 4/4 time. The scale is written on a single staff, starting on Eb4 and ascending to Eb5, then descending back to Eb4. The notes are: Eb4, F4, G4, Ab4, Bb4, C5, D5, Eb5, D5, C5, Bb4, Ab4, G4, F4, Eb4. The scale is marked with a slur from the first note to the last, and a tongue-up articulation mark above the final note.

Concert Ab Major Scale

Musical notation for the Concert Ab Major Scale in 4/4 time. The scale is written on a single staff, starting on Ab4 and ascending to Ab5, then descending back to Ab4. The notes are: Ab4, Bb4, C5, D5, Eb5, F5, G5, Ab5, G5, F5, Eb5, D5, C5, Bb4, Ab4. The scale is marked with a slur from the first note to the last, and a tongue-up articulation mark above the final note.

Concert Db Major Scale

Musical notation for the Concert Db Major Scale in 4/4 time. The scale is written on a single staff, starting on Db4 and ascending to Db5, then descending back to Db4. The notes are: Db4, Eb4, F4, G4, Ab4, Bb4, C5, Db5, C5, Bb4, Ab4, G4, F4, Eb4, Db4. The scale is marked with a slur from the first note to the last, and a tongue-up articulation mark above the final note.

Chromatic Scale - Untimed

Musical notation for the Chromatic Scale - Untimed, measures 21-24. The scale is written on a single staff, starting on C4 and ascending chromatically to C5. The notes are: C4, C#4, D4, D#4, E4, E#4, F4, F#4, G4, G#4, A4, A#4, B4, B#4, C5. The scale is marked with a slur from the first note to the last, and a tongue-up articulation mark above the final note.

Musical notation for the Chromatic Scale - Untimed, measures 25-28. The scale is written on a single staff, starting on C5 and descending chromatically to C4. The notes are: C5, B#4, B4, A#4, A4, G#4, G4, F#4, F4, E#4, E4, D#4, D4, C#4, C4. The scale is marked with a slur from the first note to the last, and a tongue-up articulation mark above the final note.

Musical notation for the Chromatic Scale - Untimed, measures 29-32. The scale is written on a single staff, starting on C4 and ascending chromatically to C5. The notes are: C4, C#4, D4, D#4, E4, E#4, F4, F#4, G4, G#4, A4, A#4, B4, B#4, C5. The scale is marked with a slur from the first note to the last, and a tongue-up articulation mark above the final note.

G.C.B.D.A. Middle School Scale Sheet

- All scales are shown with tongue - up , slur - down articulation. However, slur - up, tongue - down is also acceptable.
- All Major Scales are to be performed in 90 seconds or less.
- The scales below are the minimum requirements. More octaves performed successfully will earn more points.

Concert C Major Scale

Musical notation for the Concert C Major Scale in bass clef, 4/4 time. The scale is written in a single octave, starting on middle C (C4) and ending on the next C (C5). The notes are: C4, D4, E4, F4, G4, A4, B4, C5, B4, A4, G4, F4, E4, D4, C4. The first half of the scale (C4 to B4) is marked with a slur and a tongue-up articulation symbol. The second half (B4 to C4) is marked with a slur and a tongue-down articulation symbol.

Concert F Major Scale

6

Musical notation for the Concert F Major Scale in bass clef, 4/4 time. The scale is written in a single octave, starting on F3 and ending on F4. The notes are: F3, G3, A3, Bb3, C4, D4, E4, F4, E4, D4, C4, Bb3, A3, G3, F3. The first half (F3 to E4) is marked with a slur and a tongue-up articulation symbol. The second half (E4 to F3) is marked with a slur and a tongue-down articulation symbol.

Concert Bb Major Scale

9

Musical notation for the Concert Bb Major Scale in bass clef, 4/4 time. The scale is written in a single octave, starting on Bb2 and ending on Bb3. The notes are: Bb2, C3, D3, Eb3, F3, G3, Ab3, Bb3, Ab3, G3, F3, Eb3, D3, C3, Bb2. The first half (Bb2 to Ab3) is marked with a slur and a tongue-up articulation symbol. The second half (Ab3 to Bb2) is marked with a slur and a tongue-down articulation symbol.

Concert Eb Major Scale

12

Musical notation for the Concert Eb Major Scale in bass clef, 4/4 time. The scale is written in a single octave, starting on Eb2 and ending on Eb3. The notes are: Eb2, F2, G2, Ab2, Bb2, C3, D3, Eb3, D3, C3, Bb2, Ab2, G2, F2, Eb2. The first half (Eb2 to D3) is marked with a slur and a tongue-up articulation symbol. The second half (D3 to Eb2) is marked with a slur and a tongue-down articulation symbol.

Concert Ab Major Scale

15

Musical notation for the Concert Ab Major Scale in bass clef, 4/4 time. The scale is written in a single octave, starting on Ab1 and ending on Ab2. The notes are: Ab1, Bb1, C2, Db2, Eb2, F2, G2, Ab2, G2, F2, Eb2, Db2, C2, Bb1, Ab1. The first half (Ab1 to G2) is marked with a slur and a tongue-up articulation symbol. The second half (G2 to Ab1) is marked with a slur and a tongue-down articulation symbol.

Concert Db Major Scale

18

Musical notation for the Concert Db Major Scale in bass clef, 4/4 time. The scale is written in a single octave, starting on Db1 and ending on Db2. The notes are: Db1, Eb1, F1, Gb1, Ab1, Bb1, C2, Db2, C2, Bb1, Ab1, Gb1, F1, Eb1, Db1. The first half (Db1 to C2) is marked with a slur and a tongue-up articulation symbol. The second half (C2 to Db1) is marked with a slur and a tongue-down articulation symbol.

Chromatic Scale - Untimed

21

Musical notation for the Chromatic Scale - Untimed in bass clef. The first line shows the first 10 notes of the scale: C2, C#2, D2, D#2, E2, E#2, F2, F#2, G2, G#2. Each note is marked with a tongue-up articulation symbol.

25

Musical notation for the Chromatic Scale - Untimed in bass clef. The second line shows the next 10 notes of the scale: A2, A#2, B2, Bb2, B2, B#2, C3, Cb3, C3, C#3. The first five notes (A2 to B#2) are marked with a slur and a tongue-up articulation symbol. The last five notes (C3 to C#3) are marked with a slur and a tongue-down articulation symbol.

29

Musical notation for the Chromatic Scale - Untimed in bass clef. The third line shows the final 10 notes of the scale: D3, Db3, D3, D#3, E3, Eb3, E3, E#3, F3, Fb3. The first five notes (D3 to E#3) are marked with a slur and a tongue-up articulation symbol. The last five notes (F3 to Fb3) are marked with a slur and a tongue-down articulation symbol.

Clarinet in B \flat

G.C.B.D.A. Middle School Scale Sheet

- All scales are shown with tongue - up , slur - down articulation. However, slur - up, tongue - down is also acceptable.

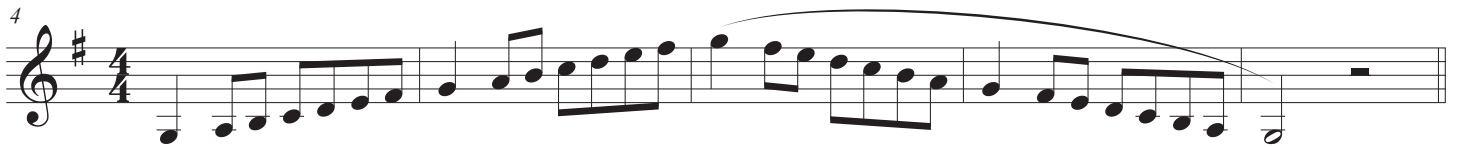
- All Major Scales are to be performed in 90 seconds or less.

- The scales below are the minimum requirements. More octaves performed successfully will earn more points.

Concert C Major Scale



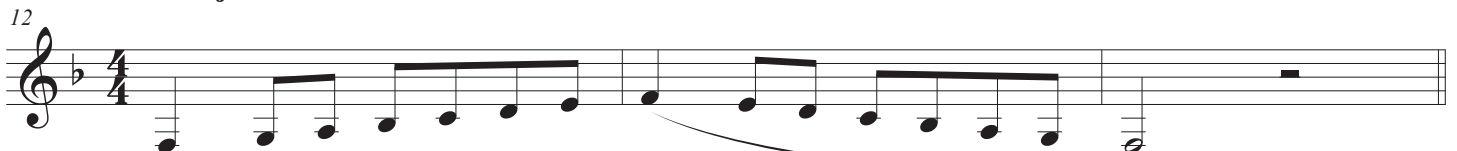
Concert F Major Scale



Concert Bb Major Scale



Concert Eb Major Scale



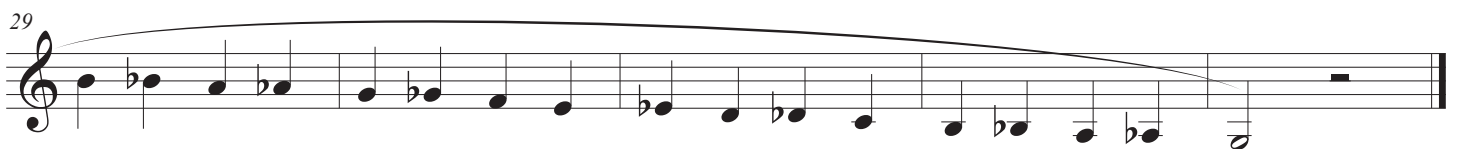
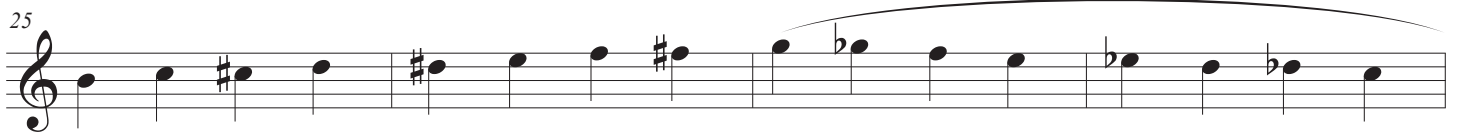
Concert Ab Major Scale



Concert Db Major Scale



Chromatic - Untimed



G.C.B.D.A. Middle School Scale Sheet

- All scales are shown with tongue - up , slur - down articulation. However, slur - up, tongue - down is also acceptable.
- All Major Scales are to be performed in 90 seconds or less.
- The scales below are the minimum requirements. More octaves performed successfully will earn more points.

Concert C Major Scale

Musical notation for the Concert C Major Scale in 4/4 time. The scale is written in treble clef with a key signature of one sharp (F#). It consists of two lines of music. The first line contains the ascending scale: C4, D4, E4, F#4, G4, A4, B4, C5. The second line contains the descending scale: B4, A4, G4, F#4, E4, D4, C4. A slur covers the entire scale, and a tongue-up articulation mark is placed above the first note (C4).

Concert F Major Scale

Musical notation for the Concert F Major Scale in 4/4 time. The scale is written in treble clef with a key signature of one sharp (F#). It consists of two lines of music. The first line contains the ascending scale: F4, G4, A4, B4, C5, D5, E5, F6. The second line contains the descending scale: E5, D5, C5, B4, A4, G4, F4. A slur covers the entire scale, and a tongue-up articulation mark is placed above the first note (F4).

Concert Bb Major Scale

Musical notation for the Concert Bb Major Scale in 4/4 time. The scale is written in treble clef with a key signature of two flats (Bb, Eb). It consists of two lines of music. The first line contains the ascending scale: Bb4, C5, D5, Eb5, E5, F5, G5, Bb6. The second line contains the descending scale: Ab5, G5, F5, Eb5, D5, C5, Bb4. A slur covers the entire scale, and a tongue-up articulation mark is placed above the first note (Bb4).

Concert Eb Major Scale

Musical notation for the Concert Eb Major Scale in 4/4 time. The scale is written in treble clef with a key signature of three flats (Eb, Ab, Db). It consists of two lines of music. The first line contains the ascending scale: Eb4, F4, G4, Ab4, Bb4, C5, D5, Eb6. The second line contains the descending scale: Db5, C5, Bb4, Ab4, G4, F4, Eb4. A slur covers the entire scale, and a tongue-up articulation mark is placed above the first note (Eb4).

Concert Ab Major Scale

Musical notation for the Concert Ab Major Scale in 4/4 time. The scale is written in treble clef with a key signature of four flats (Ab, Bb, Eb, Fb). It consists of two lines of music. The first line contains the ascending scale: Ab4, Bb4, C5, Db5, Eb5, F5, G5, Ab6. The second line contains the descending scale: Gb5, F5, Eb5, Db5, C5, Bb4, Ab4. A slur covers the entire scale, and a tongue-up articulation mark is placed above the first note (Ab4).

Concert Db Major Scale

Musical notation for the Concert Db Major Scale in 4/4 time. The scale is written in treble clef with a key signature of five flats (Db, Eb, Fb, Gb, Ab). It consists of two lines of music. The first line contains the ascending scale: Db4, Eb4, Fb4, Gb4, Ab4, Bb4, C5, Db6. The second line contains the descending scale: Cb5, Bb4, Ab4, Gb4, Fb4, Eb4, Db4. A slur covers the entire scale, and a tongue-up articulation mark is placed above the first note (Db4).

Chromatic - Untimed

Musical notation for the Chromatic - Untimed scale in 4/4 time. The scale is written in treble clef. It consists of two lines of music. The first line contains the ascending chromatic scale: C4, C#4, D4, D#4, E4, E#4, F4, F#4, G4, G#4, A4, A#4, B4, B#4, C5. The second line contains the descending chromatic scale: B4, Bb4, Ab4, Abb4, G4, Gb4, F4, Fb4, E4, Eb4, D4, Db4, C4. A slur covers the entire scale, and a tongue-up articulation mark is placed above the first note (C4).

Musical notation for the Chromatic - Untimed scale in 4/4 time. This line contains the descending chromatic scale: B4, Bb4, Ab4, Abb4, G4, Gb4, F4, Fb4, E4, Eb4, D4, Db4, C4. A slur covers the entire scale, and a tongue-up articulation mark is placed above the first note (B4).

Musical notation for the Chromatic - Untimed scale in 4/4 time. This line contains the descending chromatic scale: B4, Bb4, Ab4, Abb4, G4, Gb4, F4, Fb4, E4, Eb4, D4, Db4, C4. A slur covers the entire scale, and a tongue-up articulation mark is placed above the first note (B4).

G.C.B.D.A. Middle School Scale Sheet

- All scales are shown with tongue - up , slur - down articulation. However, slur - up, tongue - down is also acceptable.
- All Major Scales are to be performed in 90 seconds or less.
- The scales below are the minimum requirements. More octaves performed successfully will earn more points.

Concert C Major Scale

Musical notation for the Concert C Major Scale in 4/4 time. The scale is written on a single staff with a treble clef and a key signature of one sharp (F#). The notes are C4, D4, E4, F#4, G4, A4, B4, C5, B4, A4, G4, F#4, E4, D4, C4. The first four notes are slurred together, and the last four notes are also slurred together.

Concert F Major Scale

Musical notation for the Concert F Major Scale in 4/4 time. The scale is written on a single staff with a treble clef and a key signature of two sharps (F# and C#). The notes are F4, G4, A4, B4, C5, B4, A4, G4, F#4, E4, D4, C4, B3, A3, G3, F4. The first four notes are slurred together, and the last four notes are also slurred together.

Concert Bb Major Scale

Musical notation for the Concert Bb Major Scale in 4/4 time. The scale is written on a single staff with a treble clef and a key signature of one sharp (F#). The notes are Bb4, C5, D5, Eb5, F5, G5, Ab5, Bb5, Ab5, G5, F5, Eb5, D5, C5, Bb4. The first four notes are slurred together, and the last four notes are also slurred together.

Concert Eb Major Scale

Musical notation for the Concert Eb Major Scale in 4/4 time. The scale is written on a single staff with a treble clef and a key signature of two sharps (F# and C#). The notes are Eb4, F4, G4, A4, B4, C5, B4, A4, G4, F#4, E4, D4, C4, B3, A3, G3, Eb4. The first four notes are slurred together, and the last four notes are also slurred together.

Concert Ab Major Scale

Musical notation for the Concert Ab Major Scale in 4/4 time. The scale is written on a single staff with a treble clef and a key signature of one flat (Bb). The notes are Ab4, Bb4, C5, D5, Eb5, F5, G5, Ab5, Ab5, G5, F5, Eb5, D5, C5, Bb4, Ab4. The first four notes are slurred together, and the last four notes are also slurred together.

Concert Db Major Scale

Musical notation for the Concert Db Major Scale in 4/4 time. The scale is written on a single staff with a treble clef and a key signature of two flats (Bb and Eb). The notes are Db4, Eb4, F4, G4, Ab4, Bb4, C5, Db5, Db5, C5, Bb4, Ab4, G4, F4, Eb4, Db4. The first four notes are slurred together, and the last four notes are also slurred together.

Chromatic - Untimed

Musical notation for the Chromatic - Untimed section, measures 21-24. The scale is written on a single staff with a treble clef and a key signature of one sharp (F#). The notes are C4, C#4, D4, D#4, E4, E#4, F4, F#4, G4, G#4, A4, A#4, B4, B#4, C5. The notes are slurred together.

Musical notation for the Chromatic - Untimed section, measures 25-28. The scale is written on a single staff with a treble clef and a key signature of one sharp (F#). The notes are C5, B4, Bb4, Ab4, A4, G4, Gb4, F4, F#4, E4, Eb4, E4, D4, Db4, D4, C4. The notes are slurred together.

Musical notation for the Chromatic - Untimed section, measures 29-32. The scale is written on a single staff with a treble clef and a key signature of one flat (Bb). The notes are Bb4, B4, Ab4, A4, G4, Gb4, F4, F#4, E4, Eb4, E4, D4, Db4, D4, C4. The notes are slurred together.

Tenor Sax

G.C.B.D.A. Middle School Scale Sheet

- All scales are shown with tongue - up , slur - down articulation. However, slur - up, tongue - down is also acceptable.

- All Major Scales are to be performed in 90 seconds or less.

- The scales below are the minimum requirements. More octaves performed successfully will earn more points.

Concert C Major Scale



Musical notation for the Concert C Major Scale in 4/4 time. The scale starts on middle C (C4) and ascends to C5, then descends back to C4. The notes are: C4, D4, E4, F4, G4, A4, B4, C5, B4, A4, G4, F4, E4, D4, C4. The scale is written on a single staff with a treble clef and a key signature of one sharp (F#).

Concert F Major Scale



Musical notation for the Concert F Major Scale in 4/4 time. The scale starts on F4 and ascends to F5, then descends back to F4. The notes are: F4, G4, A4, Bb4, C5, D5, E5, F5, E5, D5, C5, Bb4, A4, G4, F4. The scale is written on a single staff with a treble clef and a key signature of one sharp (F#).

Concert Bb Major Scale



Musical notation for the Concert Bb Major Scale in 4/4 time. The scale starts on Bb4 and ascends to Bb5, then descends back to Bb4. The notes are: Bb4, C5, D5, Eb5, F5, G5, Ab5, Bb5, Ab5, G5, F5, Eb5, D5, C5, Bb4. The scale is written on a single staff with a treble clef and a key signature of two flats (Bb, Eb).

Concert Eb Major Scale



Musical notation for the Concert Eb Major Scale in 4/4 time. The scale starts on Eb4 and ascends to Eb5, then descends back to Eb4. The notes are: Eb4, F4, G4, Ab4, Bb4, C5, D5, Eb5, D5, C5, Bb4, Ab4, G4, F4, Eb4. The scale is written on a single staff with a treble clef and a key signature of three flats (Bb, Eb, Ab).

Concert Ab Major Scale



Musical notation for the Concert Ab Major Scale in 4/4 time. The scale starts on Ab4 and ascends to Ab5, then descends back to Ab4. The notes are: Ab4, Bb4, C5, D5, Eb5, F5, G5, Ab5, G5, F5, Eb5, D5, C5, Bb4, Ab4. The scale is written on a single staff with a treble clef and a key signature of four flats (Bb, Eb, Ab, Db).

Concert Db Major Scale



Musical notation for the Concert Db Major Scale in 4/4 time. The scale starts on Db4 and ascends to Db5, then descends back to Db4. The notes are: Db4, Eb4, F4, G4, Ab4, Bb4, C5, Db5, C5, Bb4, Ab4, G4, F4, Eb4, Db4. The scale is written on a single staff with a treble clef and a key signature of five flats (Bb, Eb, Ab, Db, Gb).

Chromatic Scale - Untimed



Musical notation for the Chromatic Scale - Untimed, measures 21-24. The scale starts on C4 and ascends chromatically to C5. The notes are: C4, C#4, D4, D#4, E4, E#4, F4, F#4, G4, G#4, A4, A#4, B4, B#4, C5. The scale is written on a single staff with a treble clef and a key signature of one sharp (F#).



Musical notation for the Chromatic Scale - Untimed, measures 25-28. The scale starts on C5 and descends chromatically to C4. The notes are: C5, B#4, B4, A#4, A4, G#4, G4, F#4, F4, E#4, E4, D#4, D4, C#4, C4. The scale is written on a single staff with a treble clef and a key signature of one sharp (F#).



Musical notation for the Chromatic Scale - Untimed, measures 29-32. The scale starts on C4 and descends chromatically to C3. The notes are: C4, Bb3, Bb4, Ab3, Ab4, Gb3, Gb4, Fb3, Fb4, Eb3, Eb4, Db3, Db4, Cb3, C4. The scale is written on a single staff with a treble clef and a key signature of five flats (Bb, Eb, Ab, Db, Gb).

G.C.B.D.A. Middle School Scale Sheet

- All scales are shown with tongue - up , slur - down articulation. However, slur - up, tongue - down is also acceptable.
- All Major Scales are to be performed in 90 seconds or less.
- The scales below are the minimum requirements. More octaves performed successfully will earn more points.

Concert C Major Scale

Musical notation for the Concert C Major Scale in 4/4 time. The scale is written on a single staff with a treble clef and a key signature of two sharps (F# and C#). The notes are: C4, D4, E4, F#4, G4, A4, B4, C5, B4, A4, G4, F#4, E4, D4, C4. The first four notes are slurred together, and the last four notes are also slurred together.

Concert F Major Scale

Musical notation for the Concert F Major Scale in 4/4 time. The scale is written on a single staff with a treble clef and a key signature of one sharp (F#). The notes are: F4, G4, A4, B4, C5, B4, A4, G4, F#4, E4, D4, C4, B3, A3, G3, F4. The first four notes are slurred together, and the last four notes are also slurred together.

Concert Bb Major Scale

Musical notation for the Concert Bb Major Scale in 4/4 time. The scale is written on a single staff with a treble clef and a key signature of two flats (Bb and Eb). The notes are: Bb4, C5, D5, Eb5, F5, G5, Ab5, Bb5, Ab5, G5, F5, Eb5, D5, C5, Bb4. The first four notes are slurred together, and the last four notes are also slurred together.

Concert Eb Major Scale

Musical notation for the Concert Eb Major Scale in 4/4 time. The scale is written on a single staff with a treble clef and a key signature of three flats (Eb, Bb, and Fb). The notes are: Eb4, F4, G4, Ab4, Bb4, C5, Bb4, Ab4, G4, F4, Eb4, D4, C4, Bb3, Ab3, G3, Eb4. The first four notes are slurred together, and the last four notes are also slurred together.

Concert Ab Major Scale

Musical notation for the Concert Ab Major Scale in 4/4 time. The scale is written on a single staff with a treble clef and a key signature of one flat (Ab). The notes are: Ab4, Bb4, C5, Bb4, Ab4, G4, F4, Eb4, D4, C4, Bb3, Ab3, G3, F4, Eb4, D4, C4. The first four notes are slurred together, and the last four notes are also slurred together.

Concert Db Major Scale

Musical notation for the Concert Db Major Scale in 4/4 time. The scale is written on a single staff with a treble clef and a key signature of two flats (Db and Ab). The notes are: Db4, Eb4, F4, G4, Ab4, Bb4, C5, Bb4, Ab4, G4, F4, Eb4, D4, C4, Bb3, Ab3, G3, Db4. The first four notes are slurred together, and the last four notes are also slurred together.

Chromatic - Untimed

Musical notation for the Chromatic - Untimed section, measures 21-24. The scale is written on a single staff with a treble clef and a key signature of one sharp (F#). The notes are: F#4, G4, A4, B4, C5, B4, A4, G4, F#4, E4, D4, C4, B3, A3, G3, F#4. The first four notes are slurred together, and the last four notes are also slurred together.

Musical notation for the Chromatic - Untimed section, measures 25-28. The scale is written on a single staff with a treble clef and a key signature of one sharp (F#). The notes are: F#4, G4, A4, B4, C5, B4, A4, G4, F#4, E4, D4, C4, B3, A3, G3, F#4. The first four notes are slurred together, and the last four notes are also slurred together.

Musical notation for the Chromatic - Untimed section, measures 29-32. The scale is written on a single staff with a treble clef and a key signature of two flats (Bb and Eb). The notes are: Bb4, C5, D5, Eb5, F5, G5, Ab5, Bb5, Ab5, G5, F5, Eb5, D5, C5, Bb4. The first four notes are slurred together, and the last four notes are also slurred together.

Horn in F

G.C.B.D.A. Middle School Scale Sheet

- All scales are shown with tongue - up , slur - down articulation. However, slur - up, tongue - down is also acceptable.

- All Major Scales are to be performed in 90 seconds or less.

- The scales below are the minimum requirements. More octaves performed successfully will earn more points.

Concert C Major Scale

Musical notation for the Concert C Major Scale in 4/4 time. The scale is written on a single staff with a treble clef and a key signature of one sharp (F#). The notes are C4, D4, E4, F#4, G4, A4, B4, C5, B4, A4, G4, F#4, E4, D4, C4. The first four notes (C4 to F#4) are marked with a slur and a tongue-up articulation. The last four notes (B4 to C4) are marked with a slur and a tongue-down articulation.

Concert F Major Scale

Musical notation for the Concert F Major Scale in 4/4 time. The scale is written on a single staff with a treble clef and a key signature of one flat (F). The notes are F4, G4, A4, Bb4, C5, Bb4, A4, G4, F4. The first four notes (F4 to Bb4) are marked with a slur and a tongue-up articulation. The last four notes (C5 to F4) are marked with a slur and a tongue-down articulation.

Concert Bb Major Scale

Musical notation for the Concert Bb Major Scale in 4/4 time. The scale is written on a single staff with a treble clef and a key signature of two flats (Bb, F). The notes are Bb4, C5, D5, Eb5, F5, Eb5, D5, C5, Bb4. The first four notes (Bb4 to Eb5) are marked with a slur and a tongue-up articulation. The last four notes (F5 to Bb4) are marked with a slur and a tongue-down articulation.

Concert Eb Major Scale

Musical notation for the Concert Eb Major Scale in 4/4 time. The scale is written on a single staff with a treble clef and a key signature of three flats (Eb, Bb, F). The notes are Eb4, F4, G4, Ab4, Bb4, Ab4, G4, F4, Eb4. The first four notes (Eb4 to Ab4) are marked with a slur and a tongue-up articulation. The last four notes (Bb4 to Eb4) are marked with a slur and a tongue-down articulation.

Concert Ab Major Scale

Musical notation for the Concert Ab Major Scale in 4/4 time. The scale is written on a single staff with a treble clef and a key signature of four flats (Ab, Eb, Bb, F). The notes are Ab4, Bb4, C5, Db5, Eb5, Db5, C5, Bb4, Ab4. The first four notes (Ab4 to Db5) are marked with a slur and a tongue-up articulation. The last four notes (Eb5 to Ab4) are marked with a slur and a tongue-down articulation.

Concert Db Major Scale

Musical notation for the Concert Db Major Scale in 4/4 time. The scale is written on a single staff with a treble clef and a key signature of five flats (Db, Ab, Eb, Bb, F). The notes are Db4, Eb4, F4, Gb4, Ab4, Gb4, F4, Eb4, Db4. The first four notes (Db4 to Gb4) are marked with a slur and a tongue-up articulation. The last four notes (Ab4 to Db4) are marked with a slur and a tongue-down articulation.

Chromatic Scale - Untimed

Musical notation for the Chromatic Scale - Untimed, measures 21-24. The scale is written on a single staff with a treble clef and a 4/4 time signature. The notes are C4, C#4, D4, D#4, E4, E#4, F4, F#4, G4, G#4, A4, A#4, B4, B#4, C5. Each note is marked with a slur and a tongue-up articulation.

Musical notation for the Chromatic Scale - Untimed, measures 25-28. The scale is written on a single staff with a treble clef and a 4/4 time signature. The notes are C5, B4, Bb4, Ab4, G4, Gb4, F4, Fb4, E4, Eb4, D4, Db4, C4. Each note is marked with a slur and a tongue-down articulation.

Musical notation for the Chromatic Scale - Untimed, measures 29-32. The scale is written on a single staff with a treble clef and a 4/4 time signature. The notes are C4, B3, Bb3, Ab3, G3, Gb3, F3, Fb3, E3, Eb3, D3, Db3, C3. Each note is marked with a slur and a tongue-down articulation.

Trumpet in B \flat

Euphonium T.C. G.C.B.D.A. Middle School Scale Sheet

- All scales are shown with tongue - up , slur - down articulation. However, slur - up, tongue - down is also acceptable.

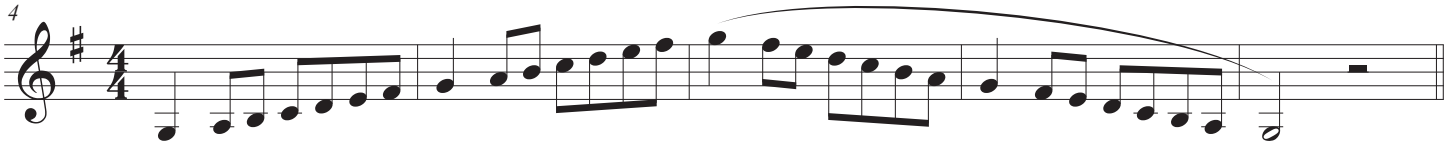
- All Major Scales are to be performed in 90 seconds or less.

- The scales below are the minimum requirements. More octaves performed successfully will earn more points.

Concert C Major Scale



Concert F Major Scale



Concert B \flat Major Scale



Concert E \flat Major Scale



Concert A \flat Major Scale



Concert D \flat Major Scale



Chromatic - Untimed



Trombone

G.C.B.D.A. Middle School Scale Sheet

- All scales are shown with tongue - up , slur - down articulation. However, slur - up, tongue - down is also acceptable.
- All Major Scales are to be performed in 90 seconds or less.
- The scales below are the minimum requirements. More octaves performed successfully will earn more points.

Concert C Major Scale



Concert F Major Scale



Concert Bb Major Scale



Concert Eb Major Scale



Concert Ab Major Scale



Concert Db Major Scale



Chromatic - Untimed



G.C.B.D.A. Middle School Scale Sheet

- All scales are shown with tongue - up , slur - down articulation. However, slur - up, tongue - down is also acceptable.

- All Major Scales are to be performed in 90 seconds or less.

- The scales below are the minimum requirements. More octaves performed successfully will earn more points.

Concert C Major Scale



Concert F Major Scale



Concert Bb Major Scale



Concert Eb Major Scale



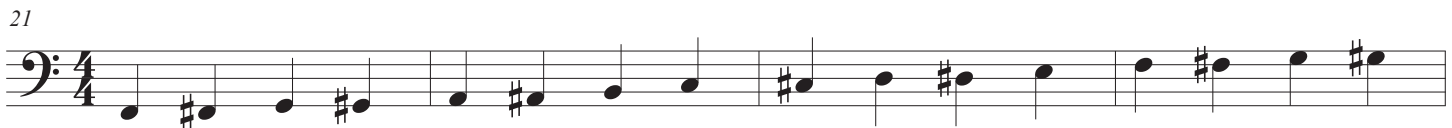
Concert Ab Major Scale



Concert Db Major Scale



Chromatic - Untimed



Tuba

G.C.B.D.A. Middle School Scale Sheet

- All scales are shown with tongue - up , slur - down articulation. However, slur - up, tongue - down is also acceptable.

- All Major Scales are to be performed in 90 seconds or less.

- The scales below are the minimum requirements. More octaves performed successfully will earn more points.

Concert C Major Scale

Musical notation for the Concert C Major Scale in 4/4 time. The scale is written in the bass clef and consists of two octaves: C4 to C5 (ascending) and C5 to C4 (descending). The notes are C, D, E, F, G, A, B, C, B, A, G, F, E, D, C.

Concert F Major Scale

Musical notation for the Concert F Major Scale in 4/4 time. The scale is written in the bass clef with one flat (Bb) and consists of two octaves: F3 to F5 (ascending) and F5 to F3 (descending). The notes are F, G, A, Bb, C, D, E, F, E, D, C, Bb, A, G, F.

Concert Bb Major Scale

Musical notation for the Concert Bb Major Scale in 4/4 time. The scale is written in the bass clef with two flats (Bb, Eb) and consists of two octaves: Bb3 to Bb5 (ascending) and Bb5 to Bb3 (descending). The notes are Bb, C, D, Eb, F, G, A, Bb, A, G, F, Eb, D, C, Bb.

Concert Eb Major Scale

Musical notation for the Concert Eb Major Scale in 4/4 time. The scale is written in the bass clef with three flats (Bb, Eb, Ab) and consists of two octaves: Eb3 to Eb5 (ascending) and Eb5 to Eb3 (descending). The notes are Eb, F, G, Ab, Bb, C, D, Eb, D, C, Bb, Ab, G, F, Eb.

Concert Ab Major Scale

Musical notation for the Concert Ab Major Scale in 4/4 time. The scale is written in the bass clef with four flats (Bb, Eb, Ab, Db) and consists of two octaves: Ab3 to Ab5 (ascending) and Ab5 to Ab3 (descending). The notes are Ab, Bb, C, Db, Eb, F, G, Ab, G, F, Eb, Db, C, Bb, Ab.

Concert Db Major Scale

Musical notation for the Concert Db Major Scale in 4/4 time. The scale is written in the bass clef with five flats (Bb, Eb, Ab, Db, Gb) and consists of two octaves: Db3 to Db5 (ascending) and Db5 to Db3 (descending). The notes are Db, Eb, F, Gb, Ab, Bb, C, Db, C, Bb, Ab, Gb, F, Eb, Db.

Chromatic - Untimed

Musical notation for the Chromatic - Untimed scale in 4/4 time. The scale is written in the bass clef and consists of two octaves of chromatic movement: C4 to C5 (ascending) and C5 to C4 (descending). The notes are C, C#, D, D#, E, E#, F, F#, G, G#, A, A#, B, B#, C.

29

Musical notation for the Chromatic - Untimed scale in 4/4 time. The scale is written in the bass clef and consists of two octaves of chromatic movement: C4 to C5 (ascending) and C5 to C4 (descending). The notes are C, C#, D, D#, E, E#, F, F#, G, G#, A, A#, B, B#, C.